

Serving in the
Midst of Crisis to
Create Opportunities

2019-2020 Annual Report



Mission of CCA

"To promote self-reliance of low-income individuals and families by forming partnerships, which will provide a systematic reduction of the cause and conditions of poverty."

The Promise of Community Action

Community Action changes people's lives, embodies the spirit of hope, improves communities, and makes America a better place to live. We care about the entire community, and we are dedicated to helping people help themselves and each other.

Our History

On August 20, 1964, President Lyndon Johnson signed into law the Economic Opportunity Act as part of his "War on Poverty," which created the nationwide Community Action Network. The purpose was to expand educational opportunities, eliminate poverty, provide health and financial assistance to the elderly, and increase assistance for the poor and unemployed. The York County Economic Opportunity Commission, having been previously established, evolved into Carolina Community Actions, Inc. (CCA) by August 2, 1965 "to do all things necessary and proper...to aid in improving the education, economic opportunities, living environment and general welfare of the people living in York, Chester and Lancaster Counties in South Carolina, either directly or through other private or public organizations." On December 8, 1965, CCA was officially recognized and approved by the Office of Economic Opportunity (OEO) as a designated community action agency and received its first grant funds. Due to the geographic area of service being altered through federal directions and actions, the Board of Directors voted on November 4, 1974 to amend the charter and add Union County as part of the CCA service area. The charter was amended again on October 14, 1997 to include Fairfield County to the corporation's geographical service area.

Our Leadership

2020 Board of Directors

Chester County

Azilee Hill
Burley McDaniel
Davida Schultz
Angela Twitty

Fairfield County

Curtis Squirewell
Michael Fanning

Lancaster County

Timothy Cureton
Leocadia Francis
Elaine McKinney
Bobbie Murchinson

Union County

Edith Foster
Sonya Glenn
Lewis Jeter, III
Pamela Sloss

York County

Floretta Anderson
Fred Garrison
Denise Lowry
Melvin McCullough
Regeana Phillips
Virginia Rolan
Isaiah Venning

Executive Director

Karen Brackett Browning

2019-2020 Head Start Policy Council

Parents and Community Representatives

Chester County

Jessica Lear
Tybreasha Sibley

Union County

Edna Jennings
Mary Robbins

York County

Sheril Corrales
Cheryl McClain
Virginia Rolan
Christian Wise

Community Representatives

Kimberly Davis

Fred Garrison

Our Work

Herein, Carolina Community Actions, Inc. (CCA) presents its Annual Report for the 2019-2020 fiscal and program year. During this period, the world was in the midst of the Coronavirus health pandemic that affected every aspect of life as we knew it at that time. Record high unemployment, business closures, scarce resources and human deaths of epic proportions were the results of deadly virus that lingered throughout 2019 and 2020. It was especially during this time that Carolina Community Actions had to remain true to its fundamental philosophy to serve the communities in Chester, Fairfield, Lancaster, Union and York Counties of South Carolina. Whereas human contact was discouraged and/or limited in an effort to remain safe and mitigate exposure of the virus, CCA met the challenge to serve by initiating innovative and strategic procedures, protocols and programs through partnerships with the State and Federal Governments. CCA's capacity to "meet needs and change lives" was expanded thus, allowing many residents to remain stable during uncertain times.

The agency continues to adhere to its purpose by providing valuable services that include: early childhood education and school readiness; adult basic education and career readiness; financial assistance to prevent utility disconnections and homelessness; and installation of home energy conservation measures to reduce energy burdens. Some of CCA's achievements this year include:

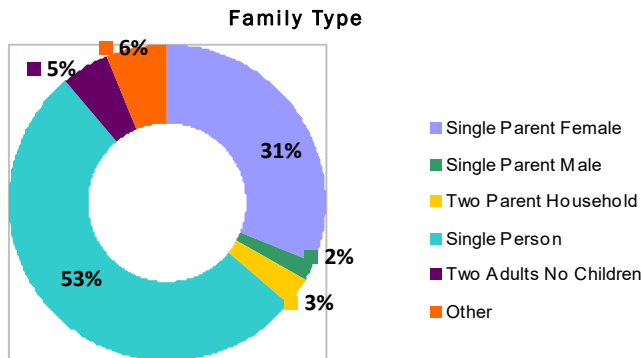
- **5,106** individuals assisted in our geographical area.
- **1,112** children and adults assisted with the attainment of educational and vocational skills in pursuit of school and career readiness.
- **418** cultivated partnerships with entities to provide services to the residents in the 5 counties geographical area for a systematic reduction of the cause and conditions of poverty.
- **\$52,620** mobilized in private sector resources, i.e. donated funds and services to meet community needs.

As CCA continues to fight the "War on Poverty" by providing high-impact programs that assist low-income individuals, families and neighborhoods, we realize that there are still too many impoverished families who struggle daily to meet basic needs and earn a competitive wage rate. Therefore, we remain committed to the Community Action Promise and CCA's chartered purpose: "to do all things necessary and proper...to aid in improving the education, economic opportunities, living environment and general welfare of the people... either directly or through other private or public organizations."

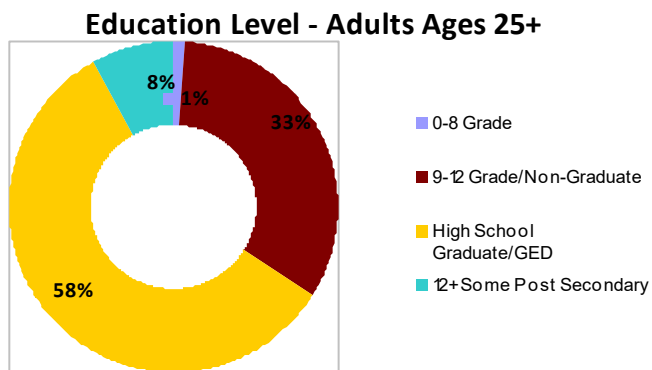
We express appreciation to all who support our mission. We request that you continue to invest resources to assist neighbors in need as the return on investment is a better quality of life for individuals and families, which improves the entire community.

Our Customers

The following data includes demographic information for those assisted by CCA in 2019-2020



Over one-half (53%) of the households served were single persons followed by more than one-fourth (31%) headed by single parent females.



Fifty-eight percent (58%) of individuals served possessed a high school diploma/GED followed by 33% who were non-high school graduates. Eight percent (8%) had obtained some post-secondary education.

Family Income Level

MIT's Living Wage Calculator indicates that a family of four with one working parent and three children in each of the service areas needs to earn above \$87,000/year before taxes just to meet basic living expenses. The income threshold for a family of four, living at or below the poverty level was \$26,208/year.



Family Size – 1 Adult 3 Children
2020 Poverty Level \$26,200

County	Living Wage Rate	Poverty Wage Rate	Gap
Chester	\$87,173/yr. \$41.91/hr.	\$26,208/yr. \$12.60/hr.	\$60,965 \$29.31/hr.
Fairfield	\$91,624/yr. \$44.05/hr.	\$26,208/yr. \$12.60/hr.	\$65,416 \$31.45/hr.
Lancaster	\$89,107/yr. \$42.84/hr.	\$26,208/yr. \$12.60/hr.	\$62,899 \$30.24/hr.
Union	\$87,672/yr. \$42.15/hr.	\$26,208/yr. \$12.60/hr.	\$61,464 \$29.55/hr.
York	\$98,072/yr. \$47.15/hr.	\$26,208/yr. \$12.60/hr.	\$71,864 \$34.55/hr.

70% of CCA's households income was at or below 100% of the federal poverty level.

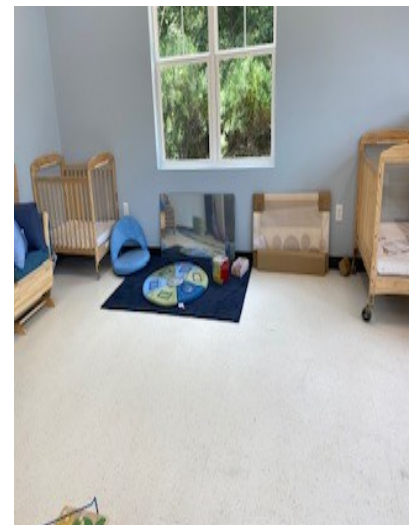
26% of CCA's households served were living in extreme poverty (annual income at or below 50% of the federal poverty level).

Comprehensive Early Childhood Education and Development Programs
Chester, Union and York Counties
August 2019 – July 2020

 <p>Promotes early learning through use of Creative Curriculum for school readiness. Emphasizes social skills and emotional well-being, along with language and literacy learning, and concept development.</p>	 <p>Provides support for pregnant women, infants and toddlers. Emphasizes the physical, cognitive, social, and emotional development through safe and developmentally enriching caregiving.</p>
436	48
Preschoolers received high-quality Pre-K childhood education and services at no cost to the family	Infants and toddlers received high-quality early childhood comprehensive services at no cost to the family.
393 (90%) living at/below 100% of the poverty guidelines	48 (100%) living at/below 100 percent of the poverty guidelines
414 received preventive and primary oral health services	44 received at least one family service
131 fathers/father figures were involved in the child’s development experiences	48 received preventive and primary oral health services
21% decrease in families receiving TANF services as a result of participation	19 fathers/father figures were involved in the child’s development experiences
Domains gains of 28%-57% were achieved for children meeting or exceeding expectations for social emotional, physical, language, cognitive, literacy development areas. In the mathematics, science, technology, social studies, and arts development domains, gains of 15% -46% were attained for children meeting expectations. Due to the COVID-19 Pandemic and remote instruction, the percentage of children assessed at enrollment below each domain decreased by an average of 49% .	

A Collaborative Effort Creates Opportunities for Infants and Toddlers

In 1998, Community Housing, Inc. and the Close Foundation of Fort Mill, SC partnered with CCA to build Avery Lake Head Start Center because of a need for a location in Fort Mill to provide free quality services to children and families. CCA and the Office of Head Start provided 25% of the \$1 million venture and Community Housing, Inc. and the Close Foundation furnished the remainder. In 2019, CCA's Head Start was in need of space for an Early Head Start classroom at Avery Lake. The Fort Mill Housing Authority (formerly Community Housing, Inc.) constructed, at no cost to CCA, a classroom that was completed in 2020. The effort allowed CCA to expand Early Head Start services to the Fort Mill community.





Emergency and Non-Emergency Utilities Financial Assistance Chester, Fairfield, Lancaster, Union and York Counties January 2020 – December 2020

2,000 individuals received emergency fuel/utility assistance.

- **467** were senior adults ages 60 (sixty) and older
- **587** were disabled.

2,634 households received non-emergency financial assistance for home heating/cooling sources

- **1,249** were senior adults 60 (sixty) and older
- **1,266** were disabled

274 households received CARES Act/COVID-19 crisis benefit assistance

Community Services
Block Grant

CSBG

Initiatives to Address Poverty at the Local Level Chester, Fairfield, Lancaster, Union and York Counties January 2020 – December 2020

Self-Sufficiency Program provides case management services such as education/training (GED, Vocational Skills Training), employment placement assistance, and support services, i.e. uniforms, transportation, etc.

- **144** individuals participated in the program
- **59** individuals received tuition, books/supplies, medical assistance, etc.
- **61** individuals obtained a vocational certificate or degree
- **63** individuals obtained employment up to a living wage

Nutrition Assistance Program provides education on proper food choices and identification of nutrition resources

- **161** receive nutrition education and access to food

Youth Leadership Program (Youth ages 16-18) provides character/personal development and paid work experience for career exploration

- **23** youth completed the program objectives

General Emergency Assistance Program Provides emergency financial assistance, i.e. rent/deposit, utilities, medicine, etc.	Regular Funds	CARES Act/COVID-19 Funds
Households obtained/maintained safe housing	270	213
Households maintained utilities	132	47



Weatherization Assistance Program (WAP) Residential Energy Efficiency and Retrofit Program Chester, Fairfield, Lancaster, Union and York Counties

Uses diagnostic equipment to improve the energy efficiency of the home, thereby reducing the energy cost and ensuring the households health and safety .

LWAP (04/01/20 - 03/31/21) & DOE WAP (4/1/20 – 3/31/21)

15 Dwellings

2020 Revenue and Expenses by Agency Programs \$12,157,791

Head Start (HS)	\$5,207,487	43%	CCA's overall administrative cost was 6%. Ninety-four percent (94%) of CCA's funding directly benefitted our customers.
Early Head Start (EHS)	\$628,299	5%	
LIHEAP	\$3,124,310	26%	
CSBG	\$1,147,324	9%	
Weatherization (WAP)	\$322,073	3%	CCA received an <u>unqualified audit</u> opinion for FY2020.
USDA	\$333,223	3%	
*In-kind Contributions	\$1,382,436	11%	
Non-Federal Share	\$12,639	.001%	